

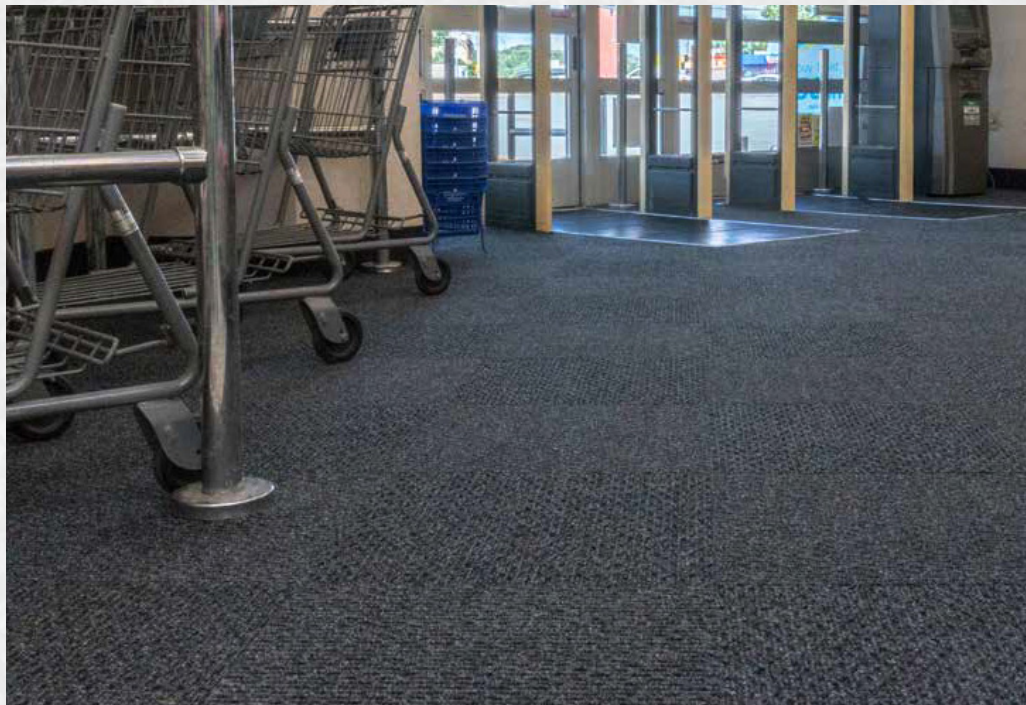


MATWORKS

COMPREHENSIVE FLOORING SOLUTIONS

Ambassador Tile

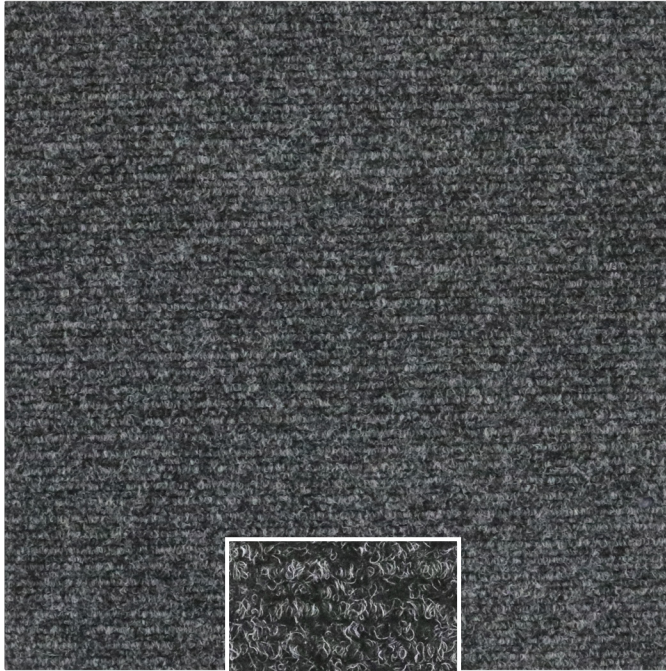
Ambassador is a highly-durable entrance carpet tile designed to protect your customers and floors. The tiles feature double the industry standard of denier fiber, and a high solid resin construction, improving crush resistance and ensuring a longer service life. The ribbed surface pattern and unique fiber blend scrape dirt, debris, and moisture from shoes, helping prevent tracking throughout your facilities.



Designed to be laid with a quarter turn, these tiles create entryways that are as beautiful as they are durable.

PRODUCT INFO

Entrance Carpet Tile



Charcoal

*Custom colors available with minimum volume requirements.



Specifications

Size	19.69" x 19.69"
Tiles Per Case	16
Overall Thickness	.43"
Material	Blend of polypropylene & polyethylene terephthalate (PET)
Material Weight	50 ounces/yard ²
Backing	Bitumen
Installation	Glue down or TacFast
Performance	5 years* *Under normal use
100% Customer Satisfaction* *Based on the life of the product	

CLEANING INSTRUCTIONS

Matworks strongly recommends cleaning your carpet tiles daily to maintain functionality and appearance. The maintenance schedule should start on the installation date to achieve the maximum life expectancy of the product.

DAILY CLEANING:

- Vacuum daily with a commercial-grade vacuum cleaner with a rotary power brush or beater bar.

QUARTERLY MAINTENANCE:

- Use a high-performance, hot water extraction method a minimum of four times a year. Based on store traffic or environmental conditions such as increased salt, sand, and dirt, up to six times a year may be necessary.

